

# 155 Eurasian Coot

Put your logo here



Coot. Adult (18-I).

## EURASIAN COOT (*Fulica atra*)

### IDENTIFICATION

38-45 cm. Black plumage with darker head and neck; olive upperparts; black wings with white tips; white bill and frontal plate; yellow-greenish legs. **Juveniles** paler, with greyish legs.

### SIMILAR SPECIES

White bill and frontal plate make this species unmistakable.

### AGEING

4 age groups can be recognized:

**Juvenile** with breast, belly and part of face off-white; upperparts dark brown-grey; bill and frontal shield (with small size) grey; iris brown; tarsus and toes dark grey; 9th primary with narrow tip.

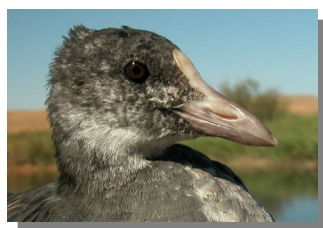
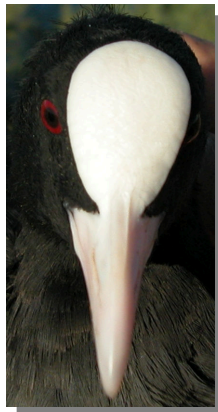
**1st year autumn/2nd year spring** similar to **adults**, but some **juvenile** feathers may be retained on body and wing coverts; with **juvenile** flight feathers so 9th primary with narrow tip; sides of tarsus grey-greenish, gradually becoming yellow-orange as in the **adult** since November.

**2nd year autumn** in some birds with sides of tarsus dull yellow or orange-yellow.

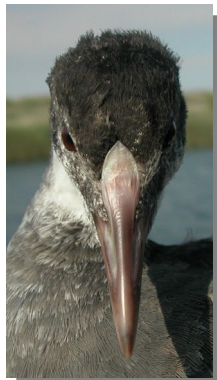
**Adult** with uniform slate grey and black plumage; bill and frontal shield white; iris reddish; sides of tarsus with extensive bright yellow, orange or even reddish; 9th primary with broad tip.



Coot. Adult. Pattern of bill and frontal plate.



Coot. Juvenile. Pattern of bill and frontal plate.



Coot. Ageing. Colour of legs: top adult; bottom 2nd year autumn.



Coot. Ageing. Colour of legs: top 1st year; bottom juvenile.



# 155 Eurasian Coot

Put your logo here



Coot. Ageing. Pattern of head and colour of iris: top adult; bottom juvenile.

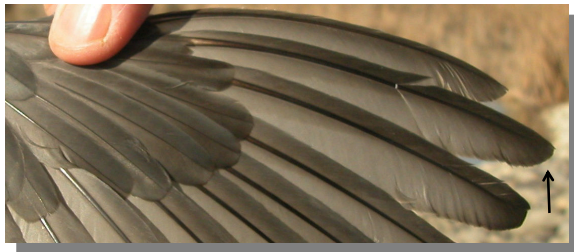


## PHENOLOGY

I	II	III	IV	V	VI	VII	VIII	IX	X	XI	XII

## STATUS EN ARAGON

Resident, with contribution of wintering European birds. Breeds mainly in the Ebro Valley and some places in Sistema Iberico and low Pyrenees.



Coot. Ageing. Pattern of 9th primary: top adult; bottom juvenile.



Coot. 1st year (22-XII)

## SEXING

Plumage of both sexes alike. Size can be an useful characteristic with most of the specimens. In **adults**: **male** with wing longer than 220 mm, tarsus longer than 62 mm; **female** with wing shorter than 211 mm, tarsus shorter than 57 mm. In **juveniles**: **male** with wing longer than 218 mm; **female** with wing shorter than 205 mm. **CAUTION**: size of frontal shield unusable due to overlap.

## MOULT

Complete **postbreeding** moult, usually finished in October. Partial **postjuvenile** moult confined to body feathers; usually finished by October. Both age classes have a **prebreeding** moult confined only to body feathers.



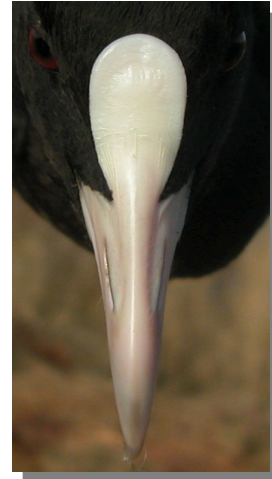
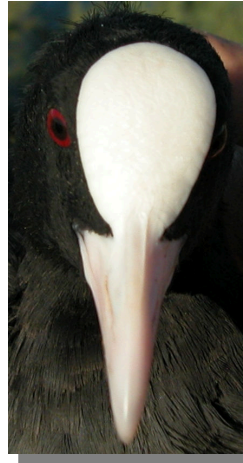
Coot. Juvenile (30-VII)

# 155 Eurasian Coot

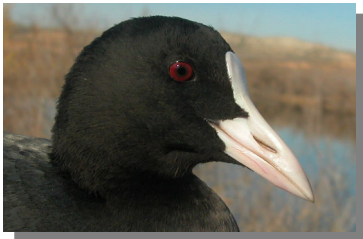
Put your logo here



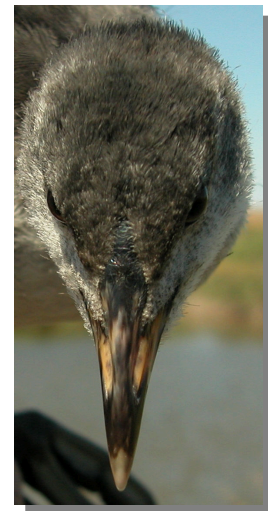
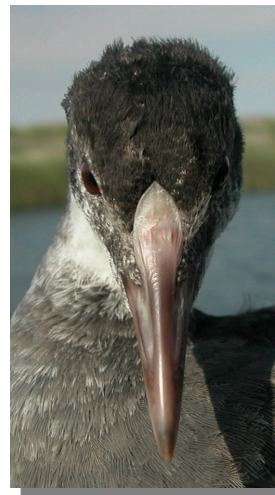
Coot. Young (09-VIII)



Coot. Pattern of frontal plate: left adult (18-I); right 1st year (22-XII).



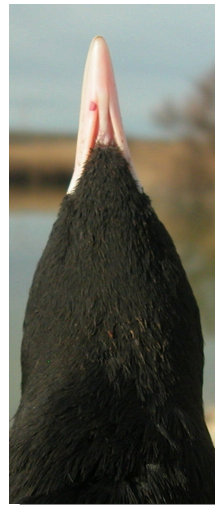
Coot. Head pattern and iris colour: top adult (18-I); bottom 1st year (22-XII).



Coot. Pattern of frontal plate: left juvenile (30-VII); right 1st year (09-VIII).



Coot. Head pattern and iris colour: top juvenile (30-VII); bottom young (09-VIII).



Coot. Chin pattern: left adult (18-I); right 1st year (22-XII).

# 155 Eurasian Coot

Put your logo here



Coot. Chin pattern: left juvenile (30-VII); right 1st year (09-VIII).



Coot. Breast pattern: left adult (18-I); right 1st year (22-XII).



Coot. Breast pattern: left juvenile (30-VII); right 1st year (09-VIII).



Coot. Pattern of underparts: left adult (18-I); right 1st year (22-XII).



Coot. Pattern of underparts: left juvenile (30-VII); right 1st year (09-VIII).



Coot. Adult: pattern of flank (18-I).



Coot. 1st year: pattern of flank (22-XII).

# 155 Eurasian Coot

Put your logo here



Coot. Juvenile: pattern of flank (30-VII).



Coot. Young: pattern of flank (09-VIII).



Coot. Pattern of legs: top adult (18-I); bottom 2nd year autumn (09-VIII).



Coot. Pattern of legs: top 1st year (22-XII); middle juvenile (30-VII); bottom young (09-VIII).



Coot. Upperpart pattern: top left adult (18-I); top right 1st year (22-XII); left juvenile (30-VII).



# 155 Eurasian Coot

Put your logo here



Coot. Pattern of tail: top left adult (18-I); top right 1st year (22-XII); left juvenile (30-VII).

Coot. 1sr year: pattern of primary coverts (22-XII).



Coot. Juvenile: pattern of primary coverts (30-VII).



Coot. Adult: pattern of primary coverts (18-I).



Coot. Adult: pattern of primaries (18-I).

# 155 Eurasian Coot

Put your logo here



Coot. 1st year: pattern of primaries (22-XII).



Coot. 1st year: pattern of secondaries (22-XII).



Coot. Juvenile: pattern of primaries (30-VII).



Coot. Juvenile: pattern of secondaries (30-VII).



Coot. Adult: pattern of secondaries (18-I).



Coot. Adult: pattern of wing (18-I).

# 155 Eurasian Coot

Put your logo here



Coot. 1st year: pattern of wing (22-XII).



Coot. Juvenile: pattern of wing (30-VII).